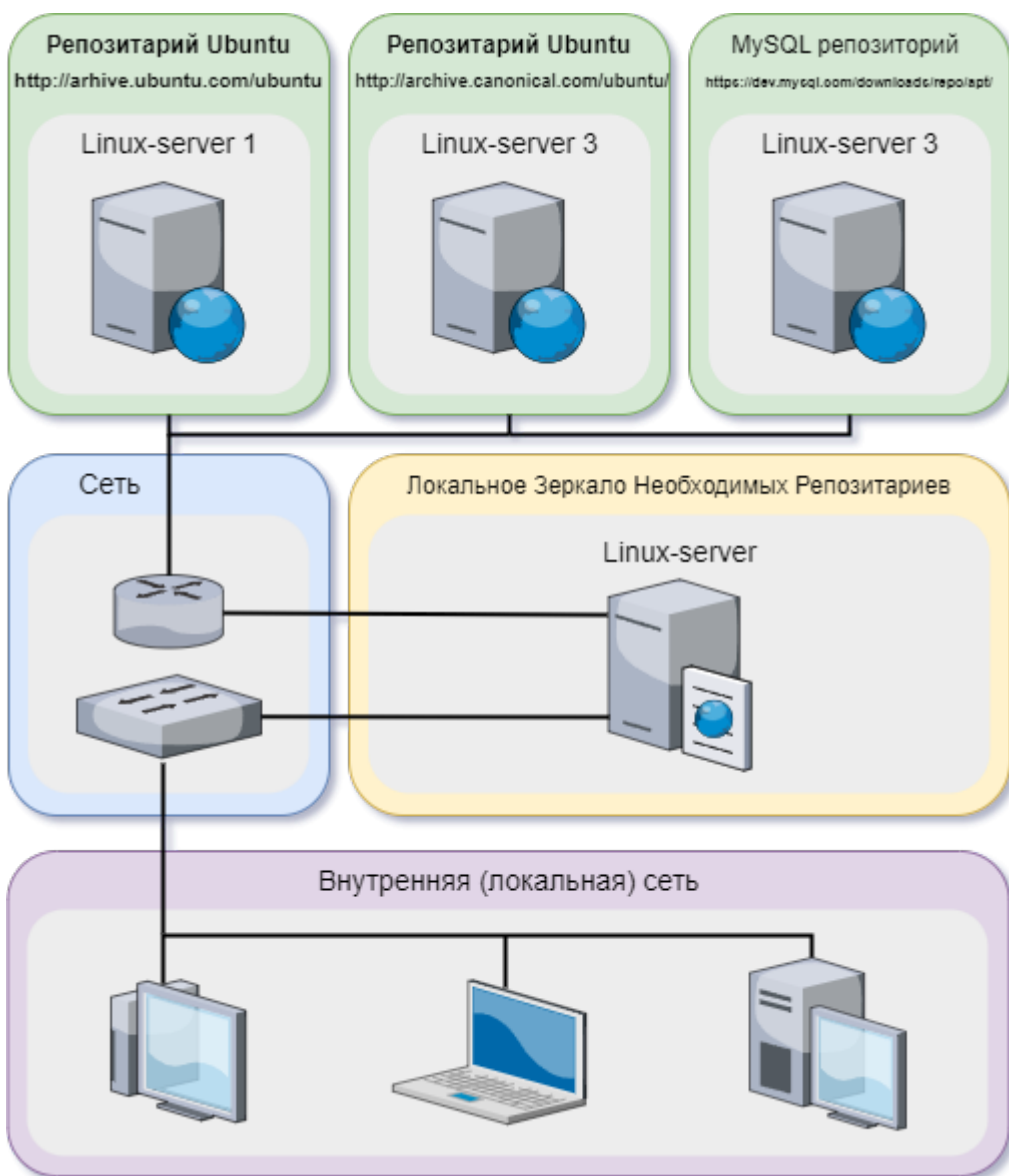


Создание локального зеркала Ubuntu

Введение

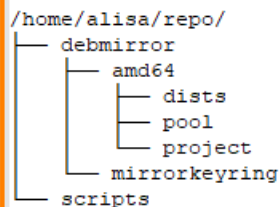
Локальные копии репозитория нужны для установки программ на машины с Ubuntu, не подключённые к интернету. В этом случае можно создать копию нужных репозиториях на внешнем диске или на компьютере, у которого есть доступ к интернету, а затем подключить эту копию в качестве репозитория к машинам, на которых интернета нет. Для этого вам потребуется компьютер с установленной Ubuntu и безлимитным доступом к интернету.

Локальная копия официального репозитория Ubuntu deb <http://ru.archive.ubuntu.com/ubuntu/focal/main/restricted> занимает 135+ GiB, учтите это.



Создание дерева папок

Создаём несколько папок в домашней директории, в которой будет храниться наш срез репозитория (или даже несколько), к примеру, согласно нижеприведенной схемы:

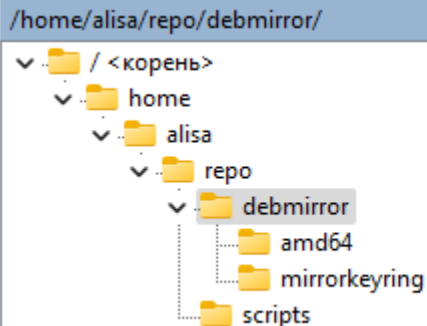


Для этого введем ниже приведенные команды

```
sudo mkdir /home/alisa/repo
sudo mkdir /home/alisa/repo/debmirror
sudo mkdir /home/alisa/repo/debmirror/amd64
sudo mkdir /home/alisa/repo/debmirror/mirrorkeyring
sudo mkdir /home/alisa/repo/scripts
```

```
alisa@repo420:~$ sudo mkdir /home/alisa/repo
sudo mkdir /home/alisa/repo/debmirror
sudo mkdir /home/alisa/repo/debmirror/amd64
sudo mkdir /home/alisa/repo/debmirror/mirrorkeyring
sudo mkdir /home/alisa/repo/scripts
```

В итоге у нас получится:



Настроим права доступа к нашей главной папке

```
sudo chown -R root:alisa /home/alisa/repo
sudo chmod -R 571 /home/alisa/repo
```

```
alisa@repo420:~$ sudo chown -R root:alisa /home/alisa/repo
sudo chmod -R 571 /home/alisa/repo
[sudo] password for alisa:
alisa@repo420:~$
```

Установка зависимостей

Установим web server Apache2 и настроим брандмауэр по аналогии в [ЭТОЙ СТАТЬЕ](#).

Обновим список пакетов

```
sudo apt-get update
```

```
alisa@repo420:~$ sudo apt-get update
Get:1 file:/cdrom jammy InRelease
Ign:1 file:/cdrom jammy InRelease
Get:2 file:/cdrom jammy Release
Err:2 file:/cdrom jammy Release
  File not found - /cdrom/dists/jammy/Release (2: No such file or directory)
Hit:3 http://ru.archive.ubuntu.com/ubuntu jammy InRelease
Hit:4 http://ru.archive.ubuntu.com/ubuntu jammy-updates InRelease
Hit:5 http://ru.archive.ubuntu.com/ubuntu jammy-backports InRelease
Hit:6 http://ru.archive.ubuntu.com/ubuntu jammy-security InRelease
Get:7 http://ru.archive.ubuntu.com/ubuntu jammy/main Translation-en [510 kB]
Get:8 http://ru.archive.ubuntu.com/ubuntu jammy/restricted Translation-en [18.6
```

и установим небходимое ПО

Если web server Apache2 уже установлен, то

```
sudo apt install debmirror gnupg xz-utils
```

Иначе

```
sudo apt install apache2 debmirror gnupg xz-utils
```

Gnupg нужен для связки ключей. Xz - необходимость декомпрессии.

```
alisa@repo420:~$ sudo apt install apache2 debmirror gnupg xz-utils
Reading package lists... 0%
```

Откройте список источников (sources.list)

```
sudo sensible-editor /etc/apt/sources.list
```

```
alisa@repo420:~$ sudo sensible-editor /etc/apt/sources.list
```

```
Select an editor. To change later, run 'select-editor'.
```

1. /bin/nano <---- easiest
2. /usr/bin/vim.basic
3. /usr/bin/vim.tiny
4. /bin/ed

```
Choose 1-4 [1]: 1
```

```
Select an editor. To change later, run 'select-editor'.
```

1. /bin/nano <---- easiest
2. /usr/bin/vim.basic
3. /usr/bin/vim.tiny
4. /bin/ed

```
Choose 1-4 [1]: 1
```

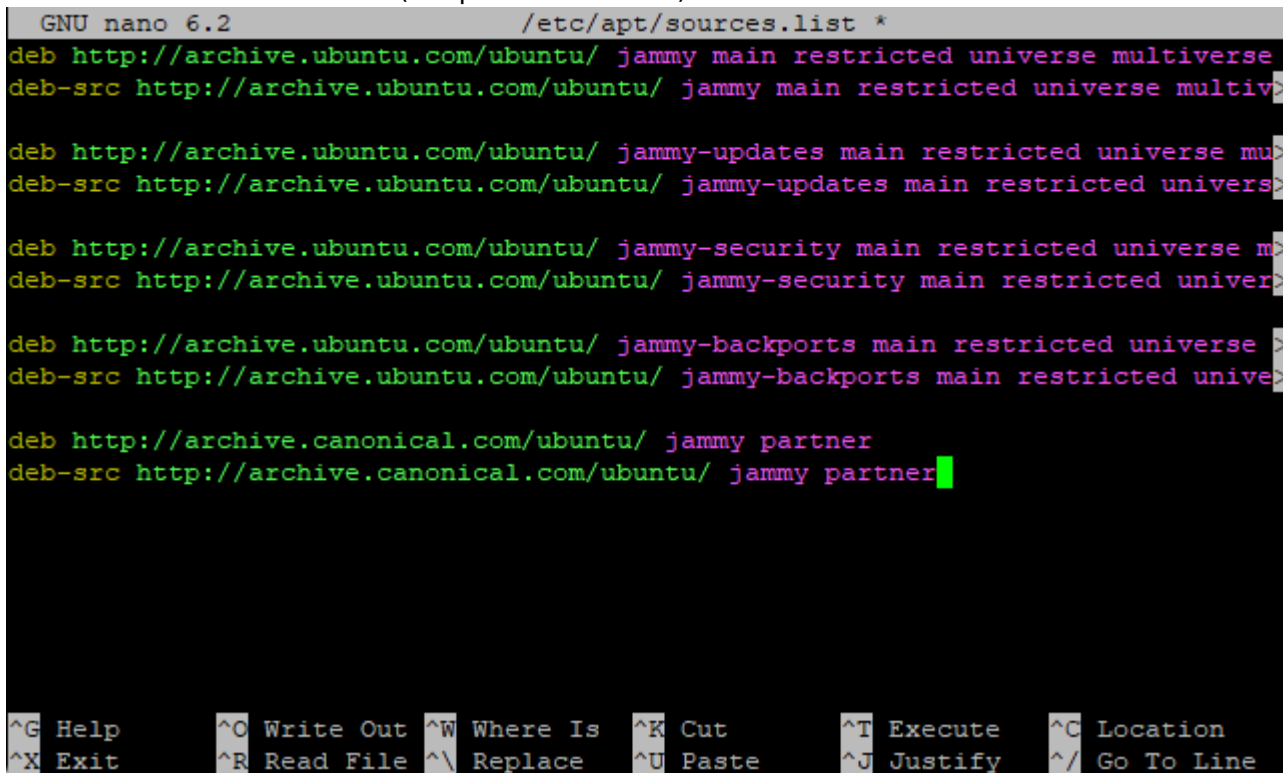
```
-----
Для nano выберем 1
```

и добавьте следующую строку:

```
#####
##### Ubuntu 22.04 LTS (Jammy Jellyfish) #####
```

```
#####  
deb http://archive.ubuntu.com/ubuntu/ jammy main restricted universe  
multiverse  
deb-src http://archive.ubuntu.com/ubuntu/ jammy main restricted universe  
multiverse  
  
deb http://archive.ubuntu.com/ubuntu/ jammy-updates main restricted universe  
multiverse  
deb-src http://archive.ubuntu.com/ubuntu/ jammy-updates main restricted  
universe multiverse  
  
deb http://archive.ubuntu.com/ubuntu/ jammy-security main restricted  
universe multiverse  
deb-src http://archive.ubuntu.com/ubuntu/ jammy-security main restricted  
universe multiverse  
  
deb http://archive.ubuntu.com/ubuntu/ jammy-backports main restricted  
universe multiverse  
deb-src http://archive.ubuntu.com/ubuntu/ jammy-backports main restricted  
universe multiverse  
  
deb http://archive.canonical.com/ubuntu/ jammy partner  
deb-src http://archive.canonical.com/ubuntu/ jammy partner
```

CTRL+O → ENTER → CTRL+X (Сохранить и выйти)



После редактирования списка репозиториев не забудьте обновить список пакетов.

```
sudo apt-get update
```

```
sudo apt-get dist-upgrade
```

```
alisa@repo420:~$ sudo sensible-editor /etc/apt/sources.list
alisa@repo420:~$ sudo apt-get update
sudo apt-get dist-upgrade
Hit:1 http://ru.archive.ubuntu.com/ubuntu jammy InRelease
Get:2 http://ru.archive.ubuntu.com/ubuntu jammy-updates InRelease [128 kB]
Get:3 http://archive.canonical.com/ubuntu jammy InRelease [11.4 kB]
Hit:4 http://ru.archive.ubuntu.com/ubuntu jammy-backports InRelease
Get:5 http://archive.ubuntu.com/ubuntu jammy InRelease [270 kB]
Get:6 http://ru.archive.ubuntu.com/ubuntu jammy-security InRelease [129 kB]
Get:7 http://archive.ubuntu.com/ubuntu jammy-updates InRelease [128 kB]
Get:8 http://archive.ubuntu.com/ubuntu jammy-security InRelease [129 kB]
Get:9 http://archive.ubuntu.com/ubuntu jammy-backports InRelease [127 kB]
0% [Working]
```

C

Скрипт mirrorkernel.sh

Теперь создадим mirrorkernel.sh, открыв предпочитаемый вами редактор таким образом

```
sudo sensible-editor /home/alisa/repo/scripts/mirrorkernel.sh
```

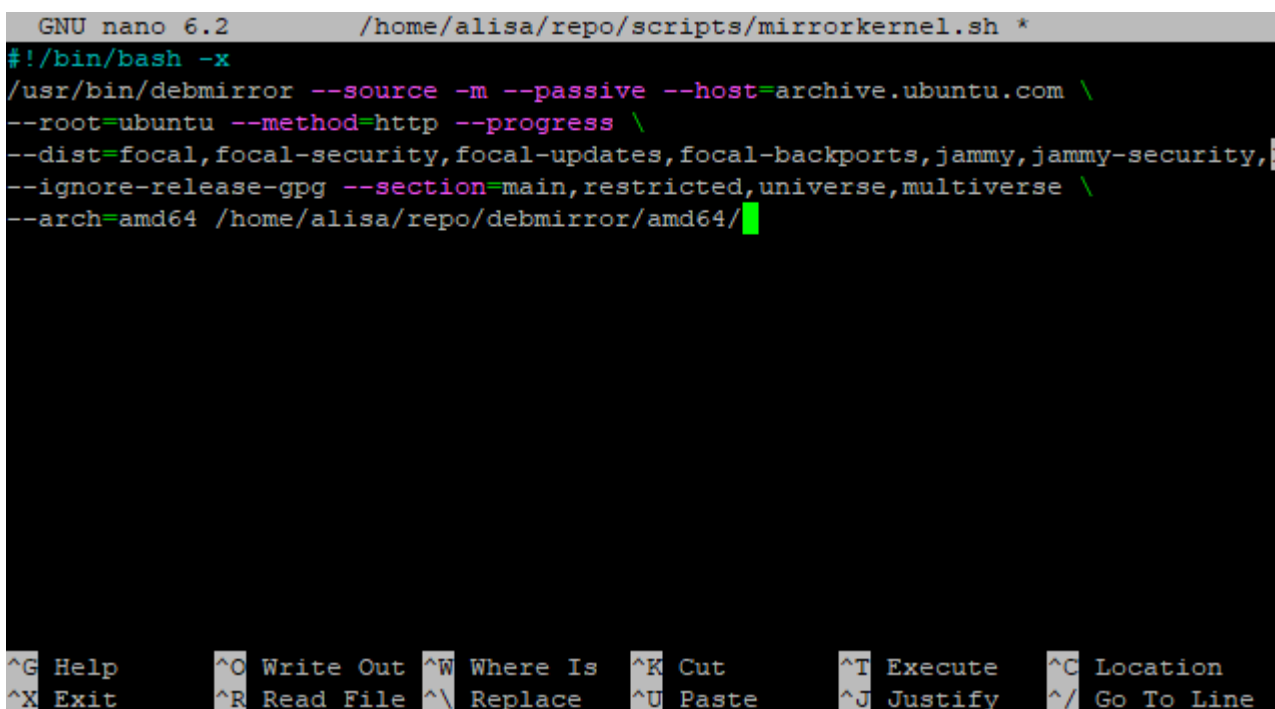
```
alisa@repo420:~$ sudo sensible-editor /home/alisa/repo/scripts/mirrorkernel.sh
GNU nano 6.2 /home/alisa/repo/scripts/mirrorkernel.sh
[ New File ]
^G Help ^O Write Out ^W Where Is ^K Cut ^T Execute ^C Location
```

Скопируйте текст из поля ниже в редактор.

```
#!/bin/bash -x
/usr/bin/debmirror --source -m --passive --host=archive.ubuntu.com \
--root=ubuntu --method=http --progress \
--dist=focal,focal-security,focal-updates,focal-backports,jammy,jammy-
security,jammy-updates,jammy-backports,noble,noble-security,noble-
updates,noble-backports \
```

```
--ignore-release-gpg --section=main,restricted,universe,multiverse \  
--arch=amd64 /home/alisa/repo/debmirror/amd64/
```

- `-host=archive.ubuntulinux.org` - это адрес репозитория (без слеша на конце,здесь `archive.ubuntulinux.org`)
- `-root=ubuntu` - это тот каталог, от которого начнётся зеркалирование пакетов. Короче - это каталог, который виден сразу после захода на адрес, указанный в `-host`
- `-method=ftp` - ftp или http
- `-dist=hardy,hardy-security,hardy-updates,hardy-backports` - название версии дистрибутива, который нас интересует. Если вы всё еще используете старую версию Ubuntu 7.10 (Gutsy Gibbon), то вам необходимо немного подправить этот скрипт, в частности, необходимо изменить значения параметра `-dist` с `hardy` на `gutsy`.
- `-section=main,restricted,multiverse,universe` - название секции, которая нам нужна (если не одна - разделитель запятая без пробелов)
- `-arch=i386` - архитектура. Значение `i386` говорит о том, что будут скачаны пакеты для компьютера с архитектурой x86. Этот параметр также может принимать значение `amd64` для 64-битных AMD или Intel компьютеров.



```
GNU nano 6.2 /home/alisa/repo/scripts/mirrorkernel.sh *  
#!/bin/bash -x  
/usr/bin/debmirror --source -m --passive --host=archive.ubuntu.com \  
--root=ubuntu --method=http --progress \  
--dist=focal,focal-security,focal-updates,focal-backports,jammy,jammy-security,\  
--ignore-release-gpg --section=main,restricted,universe,multiverse \  
--arch=amd64 /home/alisa/repo/debmirror/amd64/
```

^G Help ^O Write Out ^W Where Is ^K Cut ^T Execute ^C Location
^X Exit ^R Read File ^\ Replace ^U Paste ^J Justify ^_ Go To Line

CTRL+O → ENTER → CTRL+X (Сохранить и выйти)

Перейдем в директорию с нашим новым скриптом `mirrorkernel.sh` и дадим ему разрешение на выполнение:

```
cd /home/alisa/repo/scripts/  
sudo chmod +x mirrorkernel.sh
```

`chmod` (от англ. change mode) — команда для изменения прав доступа к файлам и каталогам, используемая в Unix-подобных операционных системах.

```
alisa@repo420:~$ cd /home/alisa/repo/scripts/  
sudo chmod +x mirrorkernel.sh  
alisa@repo420:~/repo/scripts$ █
```

Запуск и Автоисполнение

Находясь в папке с скриптом, запустим его на выполнение:

```
sudo apt install screen  
sudo screen /home/alisa/repo/scripts/mirrorkernel.sh
```

screen это терминальный мультиплексор. Процесс, запущенный внутри сессии через screen, будет продолжаться даже тогда, когда вы отключитесь от самой первой сессии. [См. подробнее...](#)

После выполнения команды пойдет загрузка файлов в наше локальное зеркало:

```
[ 0%] Getting: dists/focal-backports/universe/depll/icons-48x48@2.tar.gz...   #** GET http://archive.ubuntu.com/ub  
untu/dists/focal-backports/universe/depll/icons-48x48@2.tar.gz ==> 200 OK  
ok  
[ 0%] Getting: dists/focal-backports/universe/depll/icons-64x64.tar.gz...   #** GET http://archive.ubuntu.com/ub  
untu/dists/focal-backports/universe/depll/icons-64x64.tar.gz ==> 200 OK  
ok  
[ 0%] Getting: dists/focal-backports/universe/depll/icons-64x64@2.tar.gz... #** GET http://archive.ubuntu.com/ub  
untu/dists/focal-backports/universe/depll/icons-64x64@2.tar.gz ==> 200 OK (1s)  
ok  
[ 0%] Getting: dists/focal-security/main/depll/Components-amd64.yml.gz...   #** GET http://archive.ubuntu.com/ub  
untu/dists/focal-security/main/depll/Components-amd64.yml.gz ==> 200 OK  
ok  
[ 0%] Getting: dists/focal-security/main/depll/Components-amd64.yml.xz...  #** GET http://archive.ubuntu.com/ub  
untu/dists/focal-security/main/depll/Components-amd64.yml.xz ==> █68%
```

Cron – планировщик задач. Если подробнее, то это утилита, позволяющая выполнять скрипты на сервере в назначенное время с заранее определенной периодичностью.

```
sudo crontab -e
```

Select an editor. To change later, run 'select-editor'.

```
1. /bin/nano          <---- easiest  
2. /usr/bin/vim.basic  
3. /usr/bin/vim.tiny  
4. /bin/ed
```

Choose 1-4 [1]: 1

Для nano выберем 1

```
0 0 1 * * /home/alisa/repo/scripts/mirrorkernel.sh
```

запускать скрипт 1 числа каждого месяца

- См. подробнее о [Cron и crontab](#)

- [Генератор выражений Cron от Cronhub](#)

```
GNU nano 4.8 /tmp/crontab.QBYLpu/crontab Modified
# To define the time you can provide concrete values for
# minute (m), hour (h), day of month (dom), month (mon),
# and day of week (dow) or use '*' in these fields (for 'any').
#
# Notice that tasks will be started based on the cron's system
# daemon's notion of time and timezones.
#
# Output of the crontab jobs (including errors) is sent through
# email to the user the crontab file belongs to (unless redirected).
#
# For example, you can run a backup of all your user accounts
# at 5 a.m every week with:
# 0 5 * * 1 tar -zcf /var/backups/home.tgz /home/
#
# For more information see the manual pages of crontab(5) and cron(8)
#
# m h dom mon dow  command
0 0 1 * * /home/alisa/repo/scripts/mirrorkernel.sh
0 0 1 * * /home/alisa/repo/scripts/mirror_kernel.sh

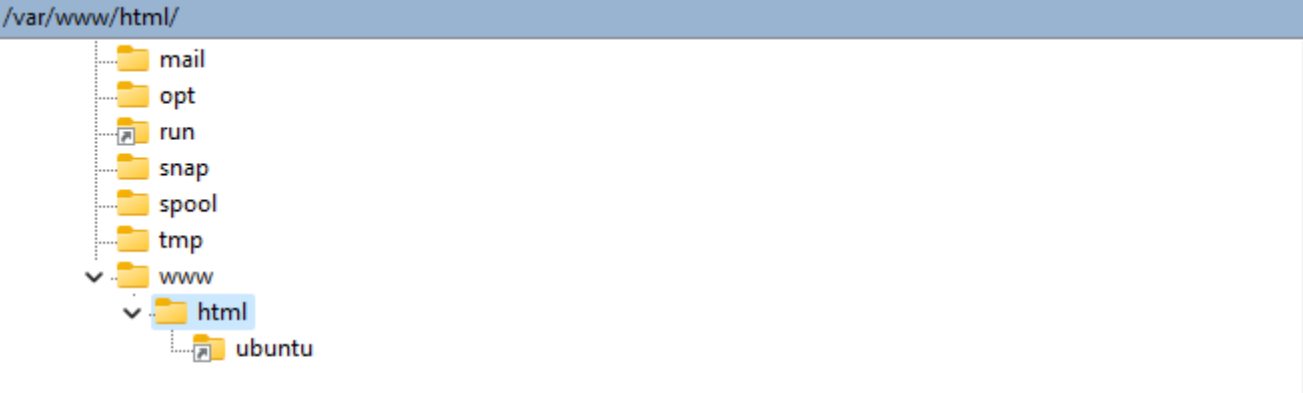
^G Get Help ^O Write Out ^W Where Is ^K Cut Text ^J Justify ^C Cur Pos
^X Exit ^R Read File ^\ Replace ^U Paste Text ^T To Spell ^_ Go To Line
```

Настройка доступа к зеркалу

Создадим символическую ссылку из /home/alisa/repo/debmirror/amd64 на /var/www/ubuntu.

```
cd /var/www/html
sudo ln -s /home/alisa/repo/debmirror/amd64 ubuntu
```

```
alisa@repo420:~$ cd /var/www/html
sudo ln -s /home/alisa/repo/debmirror/amd64 ubuntu
[sudo] password for alisa:
alisa@repo420:/var/www/html$
```

Имя	Размер	Изменено	Права	Владелец
..		01.06.2024 20:09:17	rw-xr-xr-x	root
ubuntu		01.06.2024 21:22:07	rw-rw-rw-r	root
index.html	11 KB	01.06.2024 20:11:00	rw-r--r--	root

Перезапустим Apache:

```
sudo service apache2 restart
```

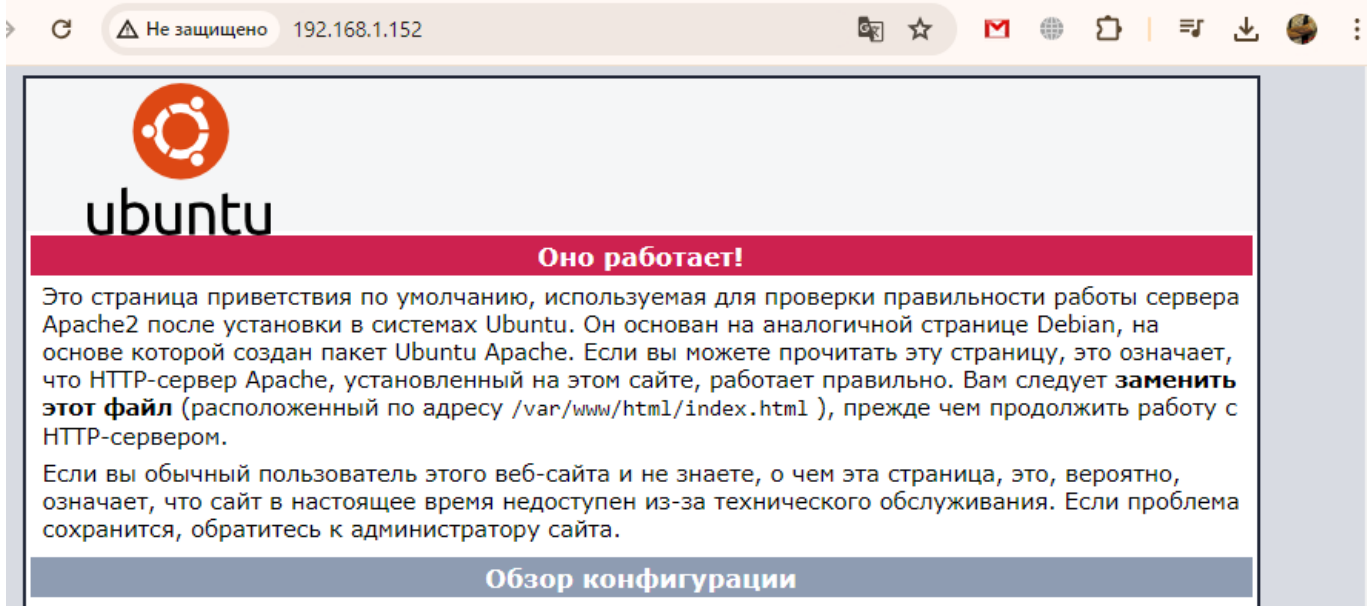
Проверим работу нашего веб-сервера

```
sudo systemctl status apache2
```

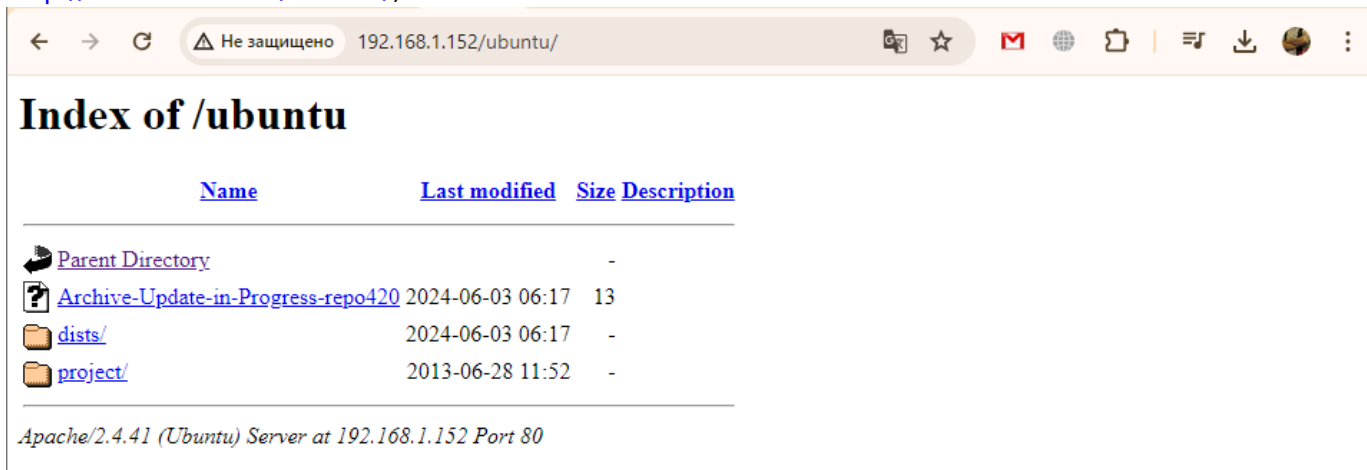
```
alisa@repo420:~$ sudo service apache2 restart
alisa@repo420:~$ sudo systemctl status apache2
● apache2.service - The Apache HTTP Server
   Loaded: loaded (/lib/systemd/system/apache2.service; enabled; vendor prese
   Active: active (running) since Sat 2024-06-01 19:24:46 UTC; 6s ago
     Docs: https://httpd.apache.org/docs/2.4/
   Process: 33200 ExecStart=/usr/sbin/apachectl start (code=exited, status=0/S
 Main PID: 33211 (apache2)
    Tasks: 55 (limit: 2220)
   Memory: 7.6M
      CPU: 106ms
   CGroup: /system.slice/apache2.service
           └─33211 /usr/sbin/apache2 -k start
             └─33212 /usr/sbin/apache2 -k start
               └─33213 /usr/sbin/apache2 -k start

Jun 01 19:24:46 repo420 systemd[1]: Starting The Apache HTTP Server...
Jun 01 19:24:46 repo420 apachectl[33210]: AH00558: apache2: Could not reliably
Jun 01 19:24:46 repo420 systemd[1]: Started The Apache HTTP Server.
lines 1-17/17 (END)
```

перейдем на главную страницу в браузере нашего сервера (в примере <http://192.168.1.152/>)



И наконец перейдем в папку для которой мы ранее указали символическую ссылку (в примере <http://192.168.1.152/ubuntu/>):



Файлы и Дополнения

Официальные репозитории Ubuntu

```
deb http://archive.ubuntu.com/ubuntu/ jammy main restricted universe
multiverse
deb-src http://archive.ubuntu.com/ubuntu/ jammy main restricted universe
multiverse

deb http://archive.ubuntu.com/ubuntu/ jammy-updates main restricted universe
multiverse
deb-src http://archive.ubuntu.com/ubuntu/ jammy-updates main restricted
universe multiverse

deb http://archive.ubuntu.com/ubuntu/ jammy-security main restricted
universe multiverse
deb-src http://archive.ubuntu.com/ubuntu/ jammy-security main restricted
```

```
universe multiverse

deb http://archive.ubuntu.com/ubuntu/ jammy-backports main restricted
universe multiverse
deb-src http://archive.ubuntu.com/ubuntu/ jammy-backports main restricted
universe multiverse

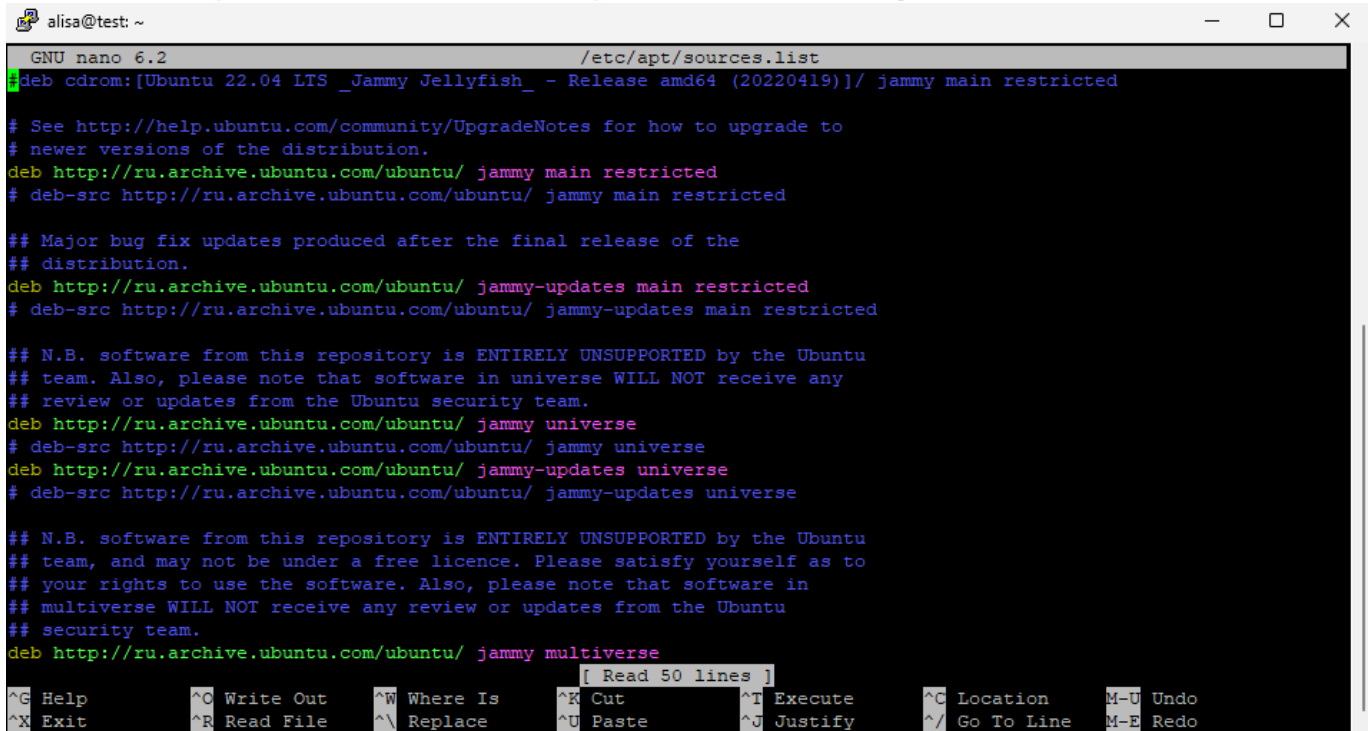
deb http://archive.canonical.com/ubuntu/ jammy partner
deb-src http://archive.canonical.com/ubuntu/ jammy partner
```

Настройка клиентских системы

Просмотреть все репозитории:

```
sudo nano /etc/apt/sources.list
```

Они также могут находиться в одном из файлов в папке `/etc/apt/sources.list.d/`

A screenshot of a terminal window titled 'alisa@test: ~'. The terminal shows the GNU nano 6.2 editor editing the file /etc/apt/sources.list. The content of the file is as follows:

```
GNU nano 6.2 /etc/apt/sources.list
deb cdrom:[Ubuntu 22.04 LTS _Jammy Jellyfish_ - Release amd64 (20220419)]/ jammy main restricted

# See http://help.ubuntu.com/community/UpgradeNotes for how to upgrade to
# newer versions of the distribution.
deb http://ru.archive.ubuntu.com/ubuntu/ jammy main restricted
# deb-src http://ru.archive.ubuntu.com/ubuntu/ jammy main restricted

## Major bug fix updates produced after the final release of the
## distribution.
deb http://ru.archive.ubuntu.com/ubuntu/ jammy-updates main restricted
# deb-src http://ru.archive.ubuntu.com/ubuntu/ jammy-updates main restricted

## N.B. software from this repository is ENTIRELY UNSUPPORTED by the Ubuntu
## team. Also, please note that software in universe WILL NOT receive any
## review or updates from the Ubuntu security team.
deb http://ru.archive.ubuntu.com/ubuntu/ jammy universe
# deb-src http://ru.archive.ubuntu.com/ubuntu/ jammy universe
deb http://ru.archive.ubuntu.com/ubuntu/ jammy-updates universe
# deb-src http://ru.archive.ubuntu.com/ubuntu/ jammy-updates universe

## N.B. software from this repository is ENTIRELY UNSUPPORTED by the Ubuntu
## team, and may not be under a free licence. Please satisfy yourself as to
## your rights to use the software. Also, please note that software in
## multiverse WILL NOT receive any review or updates from the Ubuntu
## security team.
deb http://ru.archive.ubuntu.com/ubuntu/ jammy multiverse
```

The bottom of the terminal shows the nano editor's command palette with options like Help, Write Out, Where Is, Cut, Execute, Location, Undo, Exit, Read File, Replace, Paste, Justify, Go To Line, and Redo.

Сделаем архивную копию нашего оригинального файла `sources.list`

```
sudo cp /etc/apt/sources.list /etc/apt/sources.list.backup
```

См. запись оригинального файла `sources.list`

```
#deb cdrom:[Ubuntu 22.04 LTS _Jammy Jellyfish_ - Release amd64 (20220419)]/
jammy main restricted

# See http://help.ubuntu.com/community/UpgradeNotes for how to upgrade to
# newer versions of the distribution.
deb http://ru.archive.ubuntu.com/ubuntu/ jammy main restricted
# deb-src http://ru.archive.ubuntu.com/ubuntu/ jammy main restricted
```

```
## Major bug fix updates produced after the final release of the
## distribution.
deb http://ru.archive.ubuntu.com/ubuntu/ jammy-updates main restricted
# deb-src http://ru.archive.ubuntu.com/ubuntu/ jammy-updates main restricted

## N.B. software from this repository is ENTIRELY UNSUPPORTED by the Ubuntu
## team. Also, please note that software in universe WILL NOT receive any
## review or updates from the Ubuntu security team.
deb http://ru.archive.ubuntu.com/ubuntu/ jammy universe
# deb-src http://ru.archive.ubuntu.com/ubuntu/ jammy universe
deb http://ru.archive.ubuntu.com/ubuntu/ jammy-updates universe
# deb-src http://ru.archive.ubuntu.com/ubuntu/ jammy-updates universe

## N.B. software from this repository is ENTIRELY UNSUPPORTED by the Ubuntu
## team, and may not be under a free licence. Please satisfy yourself as to
## your rights to use the software. Also, please note that software in
## multiverse WILL NOT receive any review or updates from the Ubuntu
## security team.
deb http://ru.archive.ubuntu.com/ubuntu/ jammy multiverse
deb http://ru.archive.ubuntu.com/ubuntu/ jammy multiverse
# deb-src http://ru.archive.ubuntu.com/ubuntu/ jammy multiverse
deb http://ru.archive.ubuntu.com/ubuntu/ jammy-updates multiverse
# deb-src http://ru.archive.ubuntu.com/ubuntu/ jammy-updates multiverse

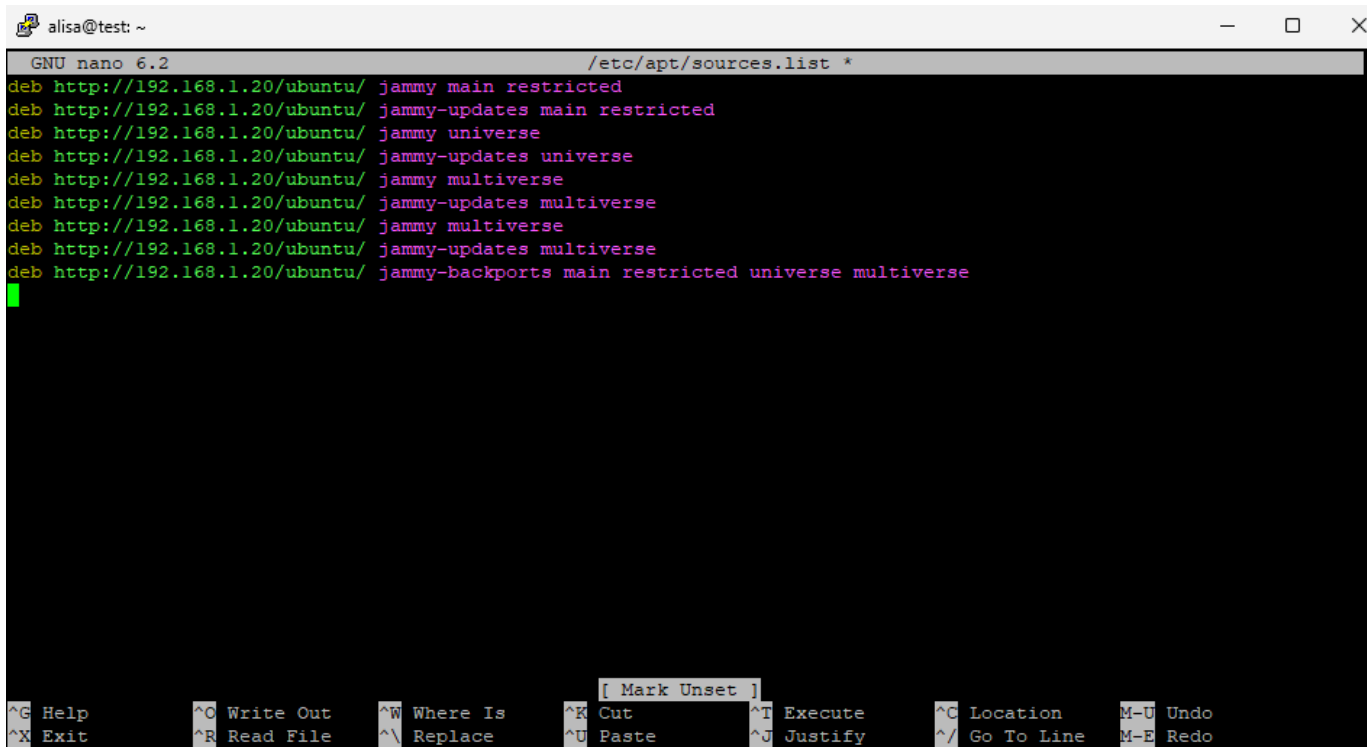
## N.B. software from this repository may not have been tested as
## extensively as that contained in the main release, although it includes
## newer versions of some applications which may provide useful features.
## Also, please note that software in backports WILL NOT receive any review
## or updates from the Ubuntu security team.
deb http://ru.archive.ubuntu.com/ubuntu/ jammy-backports main restricted
universe multiverse
# deb-src http://ru.archive.ubuntu.com/ubuntu/ jammy-backports main
restricted universe multiverse

deb http://security.ubuntu.com/ubuntu jammy-security main restricted
# deb-src http://security.ubuntu.com/ubuntu jammy-security main restricted
deb http://security.ubuntu.com/ubuntu jammy-security universe
# deb-src http://security.ubuntu.com/ubuntu jammy-security universe
deb http://security.ubuntu.com/ubuntu jammy-security multiverse
# deb-src http://security.ubuntu.com/ubuntu jammy-security multiverse

# This system was installed using small removable media
# (e.g. netinst, live or single CD). The matching "deb cdrom"
# entries were disabled at the end of the installation process.
# For information about how to configure apt package sources,
# see the sources.list(5) manual.
```

Удалим подключенные репозитории, замени их на наше зеркало и сохраним файл:

```
deb http://192.168.1.20/ubuntu/ jammy main restricted
deb http://192.168.1.20/ubuntu/ jammy-updates main restricted
deb http://192.168.1.20/ubuntu/ jammy universe
deb http://192.168.1.20/ubuntu/ jammy-updates universe
```



```
alisa@test: ~
GNU nano 6.2 /etc/apt/sources.list *
deb http://192.168.1.20/ubuntu/ jammy main restricted
deb http://192.168.1.20/ubuntu/ jammy-updates main restricted
deb http://192.168.1.20/ubuntu/ jammy universe
deb http://192.168.1.20/ubuntu/ jammy-updates universe
deb http://192.168.1.20/ubuntu/ jammy multiverse
deb http://192.168.1.20/ubuntu/ jammy-updates multiverse
deb http://192.168.1.20/ubuntu/ jammy multiverse
deb http://192.168.1.20/ubuntu/ jammy-updates multiverse
deb http://192.168.1.20/ubuntu/ jammy-backports main restricted universe multiverse
[ Mark Unset ]
^G Help      ^O Write Out  ^W Where Is   ^K Cut        ^T Execute    ^C Location   M-U Undo
^X Exit      ^R Read File  ^\ Replace    ^U Paste      ^J Justify    ^/_ Go To Line  M-E Redo
```

Получим обновленные списки пакетов:

```
sudo apt-get update
```

обновить список пакетов. `sudo apt update`

```
alisa@test:~$ sudo apt update
Get:1 http://192.168.1.20/ubuntu jammy InRelease [270 kB]
Get:2 http://192.168.1.20/ubuntu jammy-updates InRelease [128 kB]
Get:3 http://192.168.1.20/ubuntu jammy-backports InRelease [127 kB]
Get:4 http://192.168.1.20/ubuntu jammy/main amd64 Packages [10395 kB]
Get:5 http://192.168.1.20/ubuntu jammy/main i386 Packages [10040 kB]
Get:5 http://192.168.1.20/ubuntu jammy/main i386 Packages [10040 kB]
```

обновим пакеты

```
sudo apt-get dist-upgrade
```

```
alisa@test:~$ sudo apt-get dist-upgrade
[sudo] password for alisa:
Reading package lists... Done
Building dependency tree... Done
Reading state information... Done
Calculating upgrade... Done
0 upgraded, 0 newly installed, 0 to remove and 0 not upgraded.
alisa@test:~$
```

Удалим подключенные репозитории на машине с Ubuntu 24.04, заменим их на наше зеркало и сохраним файл:

```
deb http://192.168.1.20/ubuntu/ noble main restricted
deb http://192.168.1.20/ubuntu/ noble-updates main restricted
deb http://192.168.1.20/ubuntu/ noble universe
deb http://192.168.1.20/ubuntu/ noble-updates universe
```

См. запись полного файла sources.list для Ubuntu 24.04 LTS noble Jellyfish

```
#deb cdrom:[Ubuntu 24.04 LTS _noble Jellyfish_ - Release amd64 (20220419)]/
noble main restricted

# See http://help.ubuntu.com/community/UpgradeNotes for how to upgrade to
# newer versions of the distribution.
deb http://192.168.1.20/ubuntu/ noble main restricted
# deb-src http://192.168.1.20/ubuntu/ noble main restricted

## Major bug fix updates produced after the final release of the
## distribution.
deb http://192.168.1.20/ubuntu/ noble-updates main restricted
# deb-src http://192.168.1.20/ubuntu/ noble-updates main restricted

## N.B. software from this repository is ENTIRELY UNSUPPORTED by the Ubuntu
## team. Also, please note that software in universe WILL NOT receive any
## review or updates from the Ubuntu security team.
deb http://192.168.1.20/ubuntu/ noble universe
# deb-src http://192.168.1.20/ubuntu/ noble universe
deb http://192.168.1.20/ubuntu/ noble-updates universe
# deb-src http://192.168.1.20/ubuntu/ noble-updates universe

## N.B. software from this repository is ENTIRELY UNSUPPORTED by the Ubuntu
## team, and may not be under a free licence. Please satisfy yourself as to
## your rights to use the software. Also, please note that software in
## multiverse WILL NOT receive any review or updates from the Ubuntu
## security team.
deb http://192.168.1.20/ubuntu/ noble multiverse
deb http://192.168.1.20/ubuntu/ noble multiverse
# deb-src http://192.168.1.20/ubuntu/ noble multiverse
deb http://192.168.1.20/ubuntu/ noble-updates multiverse
# deb-src http://192.168.1.20/ubuntu/ noble-updates multiverse

## N.B. software from this repository may not have been tested as
## extensively as that contained in the main release, although it includes
## newer versions of some applications which may provide useful features.
## Also, please note that software in backports WILL NOT receive any review
## or updates from the Ubuntu security team.
deb http://192.168.1.20/ubuntu/ noble-backports main restricted universe
multiverse
# deb-src http://192.168.1.20/ubuntu/ noble-backports main restricted
universe multiverse

deb http://192.168.1.20/ubuntu noble-security main restricted
# deb-src http://192.168.1.20/ubuntu noble-security main restricted
deb http://192.168.1.20/ubuntu noble-security universe
# deb-src http://192.168.1.20/ubuntu noble-security universe
deb http://192.168.1.20/ubuntu noble-security multiverse
# deb-src http://192.168.1.20/ubuntu noble-security multiverse
```

```
# This system was installed using small removable media
# (e.g. netinst, live or single CD). The matching "deb cdrom"
# entries were disabled at the end of the installation process.
# For information about how to configure apt package sources,
# see the sources.list(5) manual.
```

```
alisa@smap: ~
GNU nano 7.2 /etc/apt/sources.list
Ubuntu sources have moved to /etc/apt/sources.list.d/ubuntu.sources
#deb cdrom:[Ubuntu 24.04 LTS _noble Jellyfish_ - Release amd64 (20220419)]/ noble main restricted

# See http://help.ubuntu.com/community/UpgradeNotes for how to upgrade to
# newer versions of the distribution.
deb http://192.168.1.20/ubuntu/ noble main restricted
# deb-src http://192.168.1.20/ubuntu/ noble main restricted

## Major bug fix updates produced after the final release of the
## distribution.
deb http://192.168.1.20/ubuntu/ noble-updates main restricted
# deb-src http://192.168.1.20/ubuntu/ noble-updates main restricted

## N.B. software from this repository is ENTIRELY UNSUPPORTED by the Ubuntu
## team. Also, please note that software in universe WILL NOT receive any
## review or updates from the Ubuntu security team.
deb http://192.168.1.20/ubuntu/ noble universe
# deb-src http://192.168.1.20/ubuntu/ noble universe
deb http://192.168.1.20/ubuntu/ noble-updates universe
# deb-src http://192.168.1.20/ubuntu/ noble-updates universe

## N.B. software from this repository is ENTIRELY UNSUPPORTED by the Ubuntu
## team, and may not be under a free licence. Please satisfy yourself as to
## your rights to use the software. Also, please note that software in
## multiverse WILL NOT receive any review or updates from the Ubuntu
## security team.

[ Read 52 lines ]
^G Help      ^O Write Out  ^W Where Is   ^K Cut        ^T Execute    ^C Location   M-U Undo
^X Exit      ^R Read File  ^\ Replace    ^U Paste      ^J Justify    ^_ Go To Line  M-E Redo
```

Получим обновленные списки пакетов:

```
sudo apt-get update
```

ОБНОВИТЬ СПИСОК ПАКЕТОВ. sudo apt update

```
alisa@smap:~$ sudo apt-get update
Hit:1 http://192.168.1.20/ubuntu noble InRelease
Hit:2 http://192.168.1.20/ubuntu noble-updates InRelease
Hit:3 http://192.168.1.20/ubuntu noble-backports InRelease
Get:4 http://192.168.1.20/ubuntu noble-security InRelease [126 kB]
Hit:5 http://security.ubuntu.com/ubuntu noble-security InRelease
Get:6 http://192.168.1.20/ubuntu noble-security/main amd64 Packages [256 kB]
Get:7 http://192.168.1.20/ubuntu noble-security/main Translation-en [60.5 kB]
Get:8 http://192.168.1.20/ubuntu noble-security/main amd64 Components [6,876 B]
Get:9 http://192.168.1.20/ubuntu noble-security/main amd64 c-n-f Metadata [2,680
```

ОБНОВИМ ПАКЕТЫ

```
sudo apt-get dist-upgrade
```

```
alisa@smmap:~$ sudo apt-get dist-upgrade
Reading package lists... Done
Building dependency tree... Done
Reading state information... Done
Calculating upgrade... Done
The following packages will be upgraded:
  apparmor apport apport-core-dump-handler cloud-init dhcpd-base dracut-install initramfs-tools
  initramfs-tools-bin initramfs-tools-core landscape-common libapparmor1 libnss-systemd libpam-modules
  libpam-modules-bin libpam-runtime libpam-systemd libpam0g libsystemd-shared libsystemd0 libudev1 lxd-installer
  python3-apport python3-distupgrade python3-problem-report systemd systemd-dev systemd-resolved systemd-sysv
  systemd-timesyncd tzdata ubuntu-pro-client ubuntu-pro-client-lln ubuntu-release-upgrader-core udev vim
  vim-common vim-runtime vim-tiny xkb-data xxd
40 upgraded, 0 newly installed, 0 to remove and 0 not upgraded.
Need to get 22.7 MB of archives.
After this operation, 138 kB of additional disk space will be used.
Do you want to continue? [Y/n] y
Get:1 http://192.168.1.20/ubuntu noble-updates/main amd64 libpam0g amd64 1.5.3-5ubuntu5.1 [67.7 kB]
Get:2 http://192.168.1.20/ubuntu noble-updates/main amd64 systemd-timesyncd amd64 255.4-1ubuntu8.2 [35.3 kB]
Get:3 http://192.168.1.20/ubuntu noble-updates/main amd64 systemd-resolved amd64 255.4-1ubuntu8.2 [296 kB]
Get:4 http://192.168.1.20/ubuntu noble-updates/main amd64 libapparmor1 amd64 4.0.1really4.0.0-beta3-0ubuntu0.1 [50.3
kB]
Get:5 http://192.168.1.20/ubuntu noble-updates/main amd64 systemd-dev all 255.4-1ubuntu8.2 [104 kB]
Get:6 http://192.168.1.20/ubuntu noble-updates/main amd64 systemd amd64 255.4-1ubuntu8.2 [3,471 kB]
Get:7 http://192.168.1.20/ubuntu noble-updates/main amd64 udev amd64 255.4-1ubuntu8.2 [1,873 kB]
Get:8 http://192.168.1.20/ubuntu noble-updates/main amd64 systemd-sysv amd64 255.4-1ubuntu8.2 [11.9 kB]
Get:9 http://192.168.1.20/ubuntu noble-updates/main amd64 libnss-systemd amd64 255.4-1ubuntu8.2 [159 kB]
Get:10 http://192.168.1.20/ubuntu noble-updates/main amd64 libpam-systemd amd64 255.4-1ubuntu8.2 [235 kB]
Get:11 http://192.168.1.20/ubuntu noble-updates/main amd64 libsystemd-shared amd64 255.4-1ubuntu8.2 [2,072 kB]
Get:12 http://192.168.1.20/ubuntu noble-updates/main amd64 libudev1 amd64 255.4-1ubuntu8.2 [175 kB]
```

- debmirroramd64.sh.txt

From:
<http://vladpolskiy.ru/> - book51.ru

Permanent link:
http://vladpolskiy.ru/doku.php?id=software:linux_server:local_or_private_ubuntu_mirror&rev=1722629272

Last update: 2024/08/02 23:07

